



Filtri avvitali da montare sul serbatoio Tank top return spin-on filters

Corpo filtro

Descrizione:

Portata massima:

Pressione max di esercizio:

Pressione di prova:

Pressione di scoppio:

Connessioni:

Indicatore intasamento:

Temperatura di esercizio:

Materiali:

Caratteristiche tecniche

Filtri da montarsi sul serbatoio (tank top) con cartuccia avvitala a perdere, da impegnare su linee di ritorno.

150 lt/min

secondo NFPA T 2.6.1 - 1974 : 12 bar

secondo NFPA T 2.6.1 - 1974 : 15 bar

secondo NFPA T 2.6.1 - 1974 : 25 bar

BSP

visivo ed elettrico

-30°C +110°C

• Testata: alluminio

• Corpo: acciaio

• Guarnizioni: Buna-N compatibile secondo ISO 2943 con oli minerali (HH-HL-HM-HR-HV-HG) emulsioni acquose (HFAE-HFAS)

Elemento filtrante

Setto filtrante:

Microfibra di vetro 3,6,10,25 µ

Carta 10,25 µ

Tela metallica 60,125 µ

Pressione di collasso:

Secondo ISO 2941: 4 Bar

Valvola by-pass:

1,7 Bar al ritorno o in linea

Filter head

Description:

Tank-top return line spin-on filter assemblies.

Max flow rate:

150 lt/min (40 gpm)

Max working pressure:

as per NFPA T 2.6.1 - 1974: 12 Bar (175 psi)

Test pressure:

as per NFPA T 2.6.1 - 1974: 15 Bar (217.5 psi)

Burst pressure:

as per NFPA T 2.6.1 - 1974: 25 Bar (362.5 psi)

Port connections:

BPS

Indicator:

Visual and electrical

Working temperature:

-30°C +110°C (-22°F +230°F)

Materials:

• Head: aluminium

• Housing: carbon steel

• Seal: Buna-N compatible as per ISO 2943 with mineral oil (HH-HL-HM-HR-HV-HG) water oil emulsions (HFAE-HFAS)

Filter element

Filter media:

Microglass fiber 3,6,10,25 µ

Cellulose 10,25 µ

Wire mesh 60, 125 µ

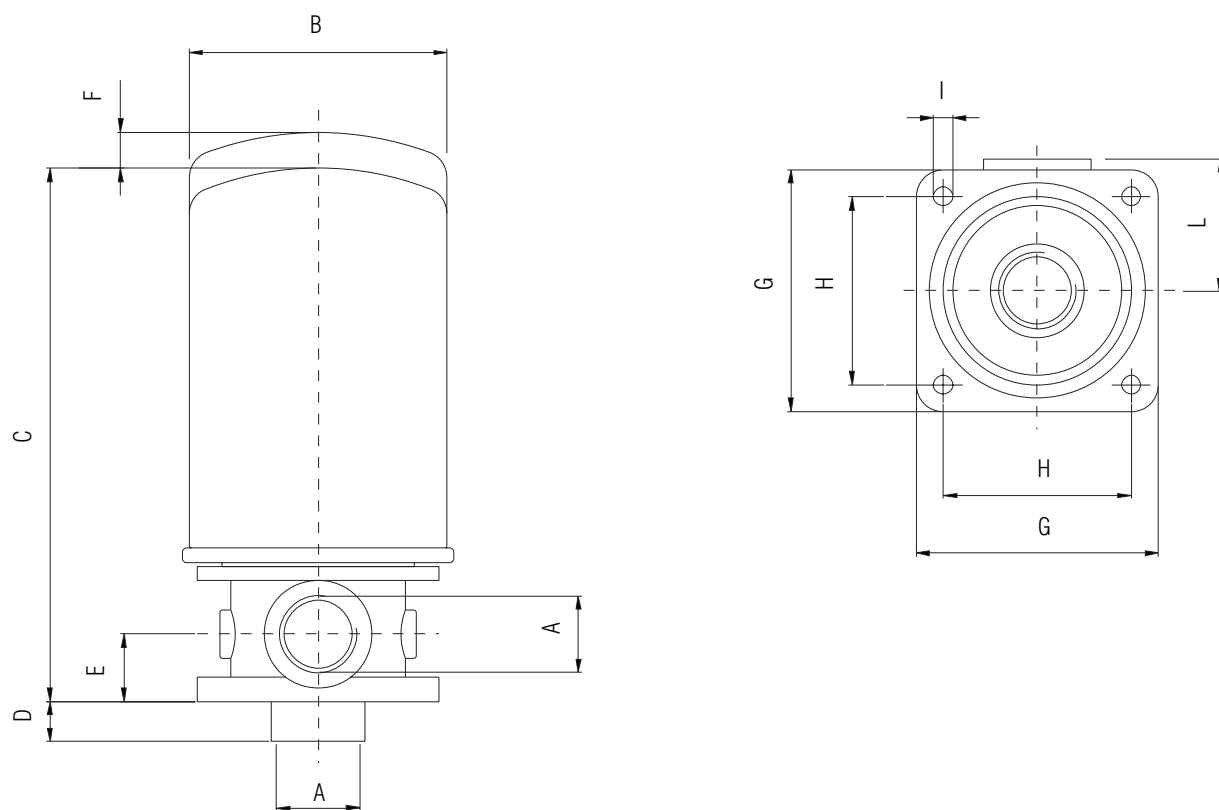
Collapse pressure:

as per ISO 2941: 4 Bar (58 psi)

By-pass setting:

return line 1,7 Bar (24.6 psi)

Informazioni dimensionali Overall dimensions

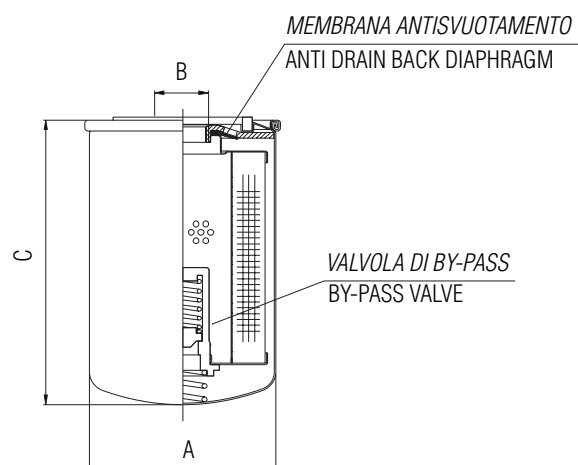


1) Grandezza nominale Nominal size

Codice Code	A	B	C	D	E	F	G	H	I	L	
FA-2-10		96	200	15	25	20	90	70	7	50	A-2-10
FA-2-11		96	245	15	25	20	90	70	7	50	A-2-11
FA-2-20		128	255	20	36	40	122	100	9	70	A-2-20
FA-2-21		128	300	20	36	40	122	100	9	70	A-2-21

2) Dimensioni cartucce Element size

Codice Code	A	B	C
A-2-10	96	3/4" BSP	148
A-2-11	96	3/4" BSP	193
A-2-20	128	1 1/4" BSP	183
A-2-21	128	1 1/4" BSP	227



3) Grado di filtrazione Filtration ratings

Codice Code	Materiale Media	Efficienza Efficiency
0	senza cartuccia / no element	-----
G03	microfibra inorganica / microglass fiber	$\beta_{3} \geq 200$
G06	microfibra inorganica / microglass fiber	$\beta_{6} \geq 200$
G10	microfibra inorganica / microglass fiber	$\beta_{10} \geq 200$
G25	microfibra inorganica / microglass fiber	$\beta_{25} \geq 200$
C10	carta trattata / cellulose	$\beta_{10} \geq 2$
C25	carta trattata / cellulose	$\beta_{25} \geq 2$
T60	tela metallica / wire mesh	-----
T125	tela metallica / wire mesh	-----

4) Connessioni Connection port

Codice Code	Connessione Connection
B4	3/4" BSP
B7	1 1/2" BSP

5) Indicatori Indicator

Codice Code	Tipo indicatore Indicator type
0	senza without
R1	manometro scala 0÷10 Bar pressure gauge indicator scale 0÷10 Bar
R2	pressostato c.a. taratura 1,3 Bar pressure switch 1,3 Bar setted O.C.
R3	pressostato c.c. taratura 1,3 Bar pressure switch 1,3 Bar setted C.C.

Codici per l'ordinazione Ordering information

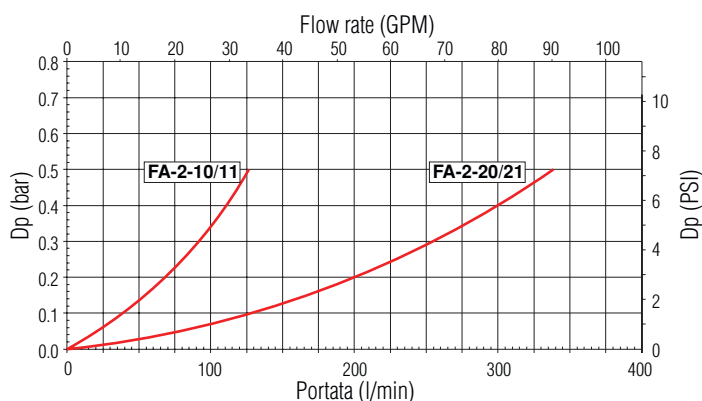
Filtro completo Filter assembly	FA-2	21	C10	BM	B7	R2
		1*	3*		4*	5*

Cartuccia Filter elements	A-2	20	C10	BM
		2*	3*	

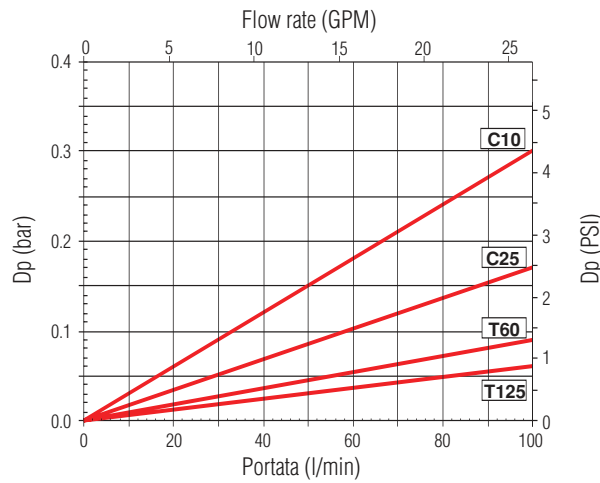
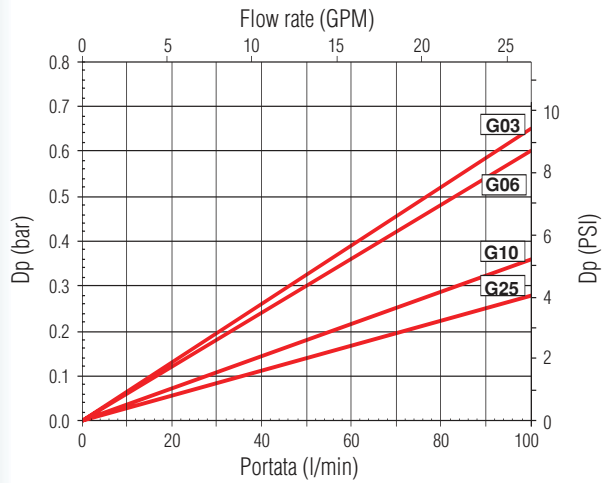
Curve di portata corpo filtro Housing pressure drop charts

Le curve (secondo ISO 3968 classe B) sono ottenute con olio minerale avente viscosità di 30 cSt e densità di 0,86 Kg/dm³. Per viscosità e densità diverse i dati variano, in prima approssimazione proporzionalmente.

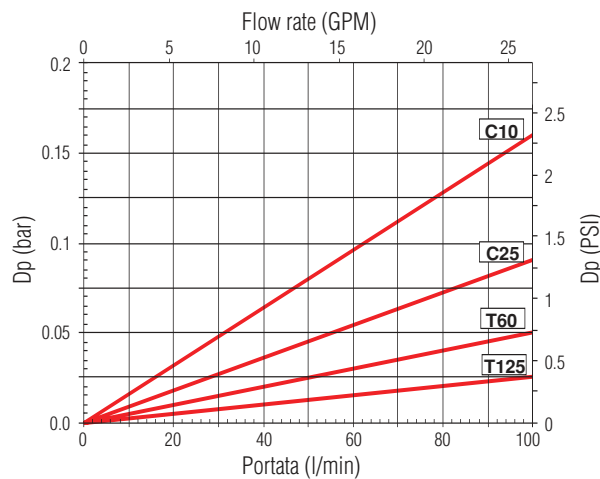
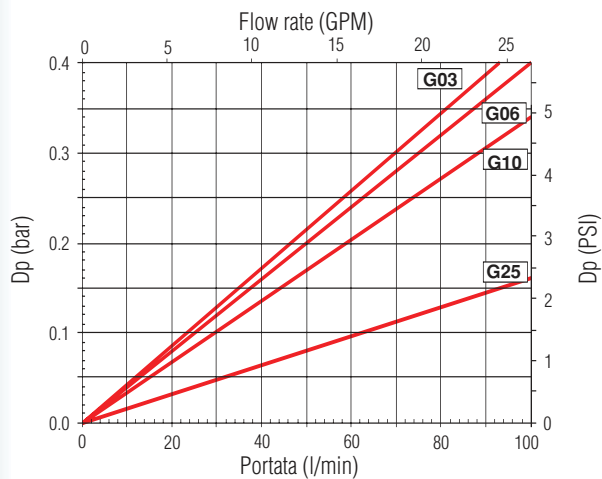
Pressure drop charts as per ISO 3968 class B. 30 Cst viscosity mineral oil



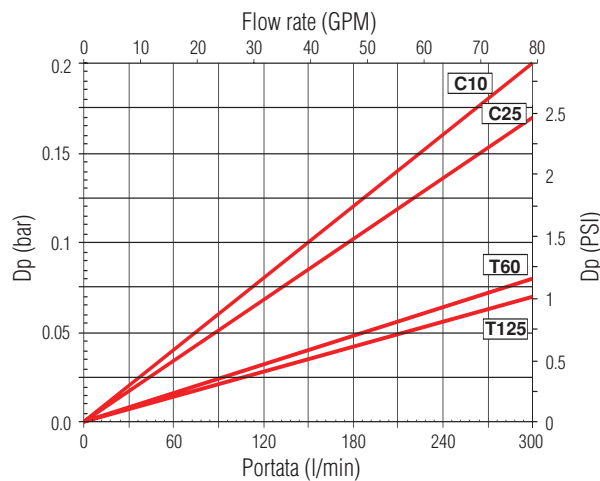
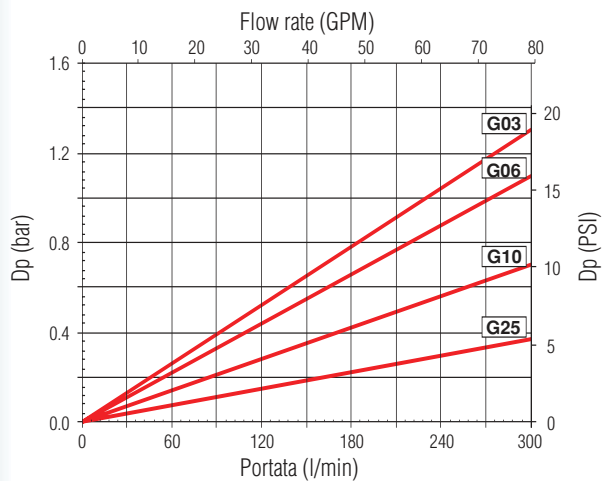
A-2-10-.-BM



A-2-11-.-BM



A-2-20-.-BM



A-2-21-.-BM

